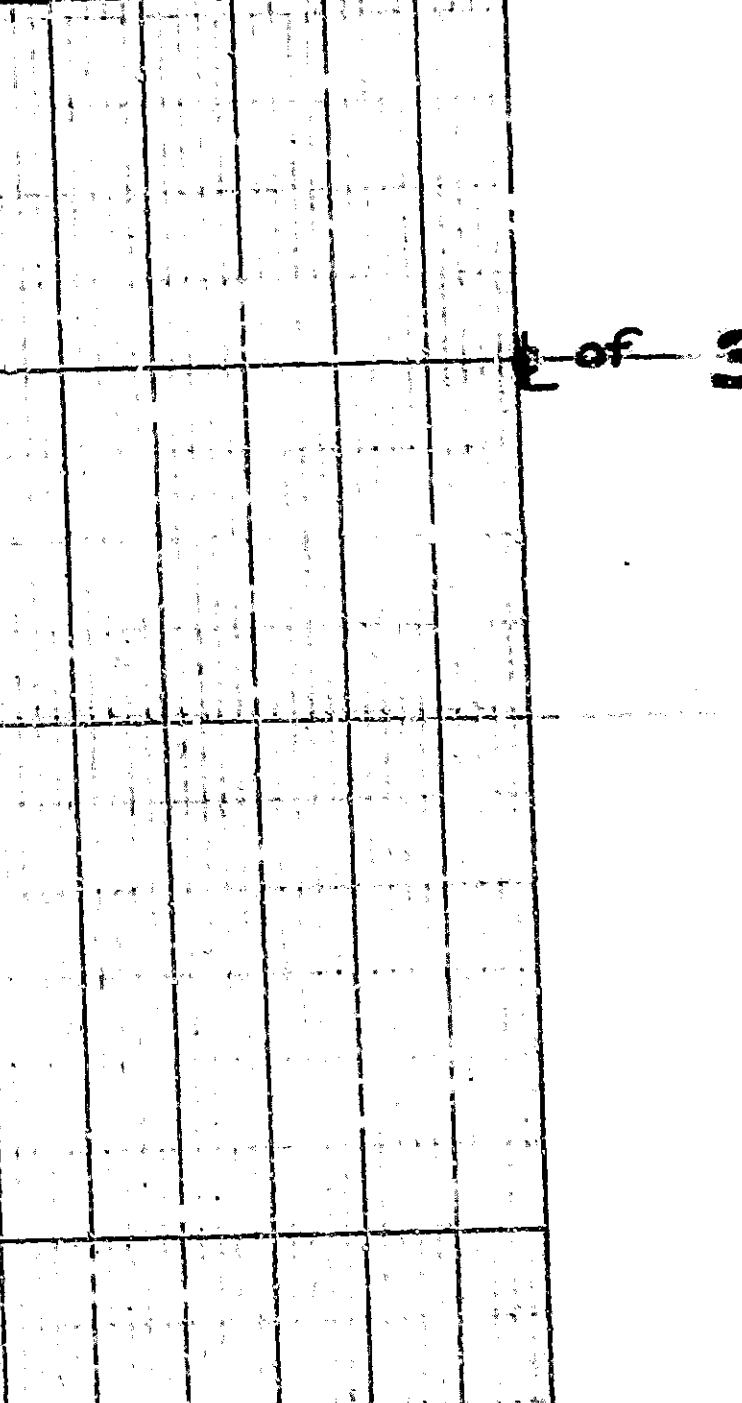
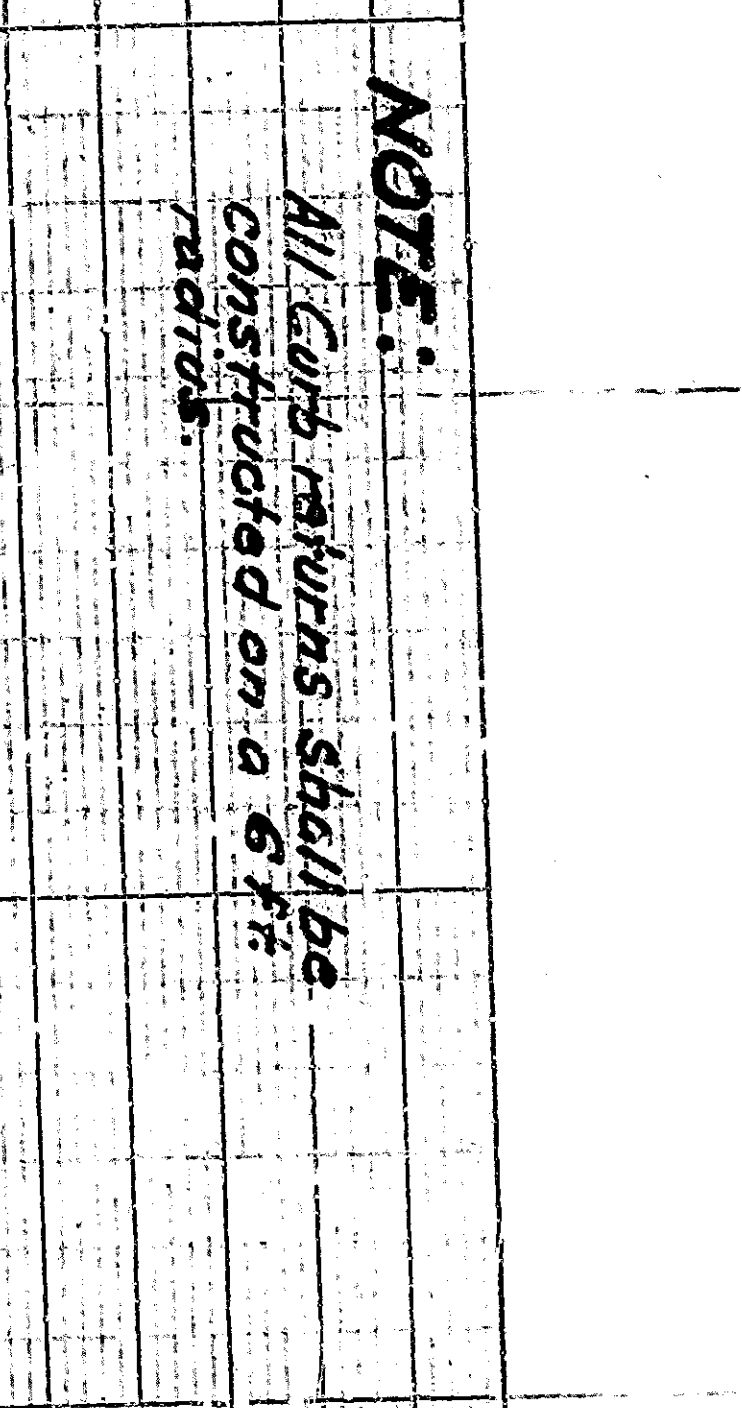
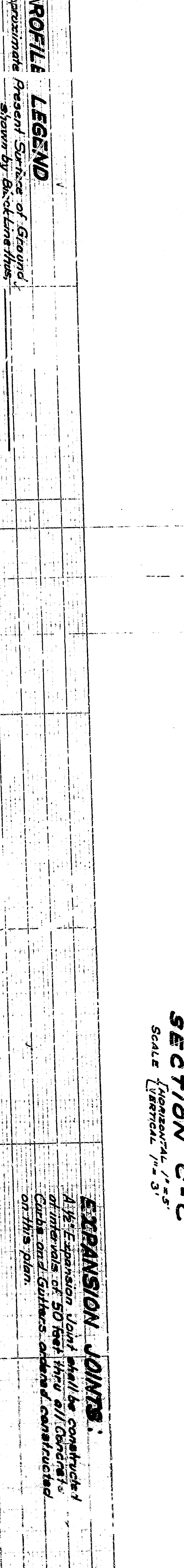
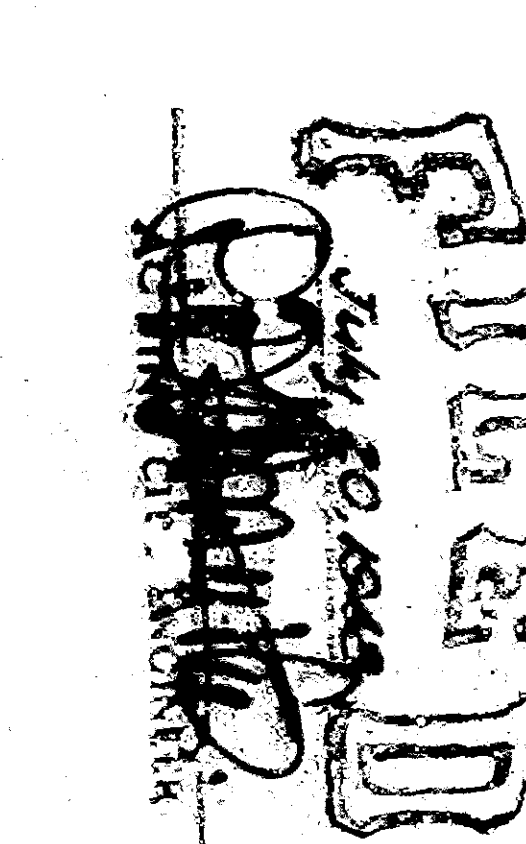


PLAN No 1715  
 FOR THE IMPROVEMENT OF  
 "F" STREET  
 BETWEEN  
 34TH STREET AND 36TH STREET  
 CITY OF SAN BERNARDINO  
 CALIFORNIA

JUNE 1948

R.D. FORSYTHE  
 ACTING CITY ENGINEER

PLAN ADOPTED - July 19, 1948



**LEGEND**  
 1. Expansion Joint - shall be constructed of 50 feet from the center of the gutter when constructed.

**NOTE**  
 All curbs and gutters shall be constructed of concrete.

**PROFILE LEGEND**  
 1. Present Surface of Ground - shown by red line thus: ---  
 2. Approximate Present Surface of Ground - shown by blue line thus: ---  
 3. Top of Curb Grade - shown by black line thus: ---  
 4. Center Line of Ground - shown by black line thus: ---  
 5. East Curb Line - shown by black line thus: ---  
 6. West Curb Line - shown by black line thus: ---

**LEGEND**  
 1. Pavement - shown by black line thus: ---  
 2. Concrete - shown by black line thus: ---  
 3. Cement Concrete - shown by black line thus: ---  
 4. Cement Concrete Gutter - shown by black line thus: ---  
 5. Cement Concrete Gutter - shown by black line thus: ---

**TITLE TO STREET**  
 "F" Street, Map of Section 1715, City of San Bernardino, California.

**GRADE ORIGIN**  
 The existing ground surface has been established by the City Engineer, City of San Bernardino, California, and is shown on the map of Section 1715, City of San Bernardino, California, adopted Sept. 1, 1947.



JUNE 1948

PLAN No 1715  
 FOR THE IMPROVEMENT OF  
 "F" STREET  
 BETWEEN  
 34TH STREET AND 36TH STREET  
 CITY OF SAN BERNARDINO  
 CALIFORNIA